

AKIRA

makes life better

Air Conditional Service Manual



Большая библиотека технической документации

<https://splitsystema48.ru/instrukcii-po-ekspluatácii-kondicionerov.html>

каталоги, инструкции, сервисные мануалы, схемы.

MODEL: AC-S10CPGB

CONTENTS

SPECIFICATION	4
EXPLODED VIEW & PART LIST	7
CIRCUIT DIAGRAM	12

SPECIFICATION

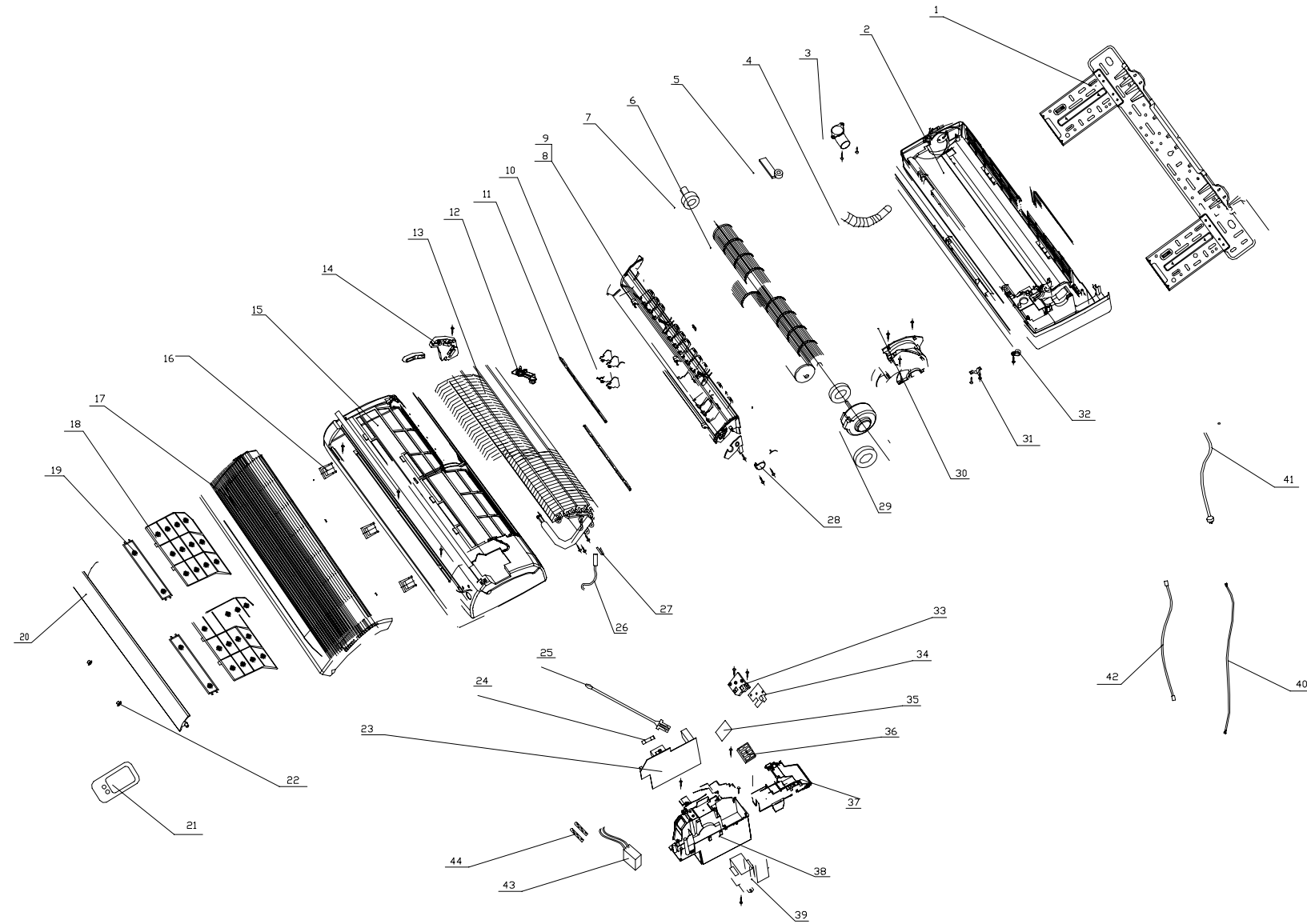
Function		Cooling
Rated voltage		220-230V~
Rated frequency		50Hz
Total capacity (W)		2500
Power input (W)		960
Rated input (W)		1150
Rated current (A)		/
Air flow volume (m ³ /h) (H/M/L)**		380 /340 /300
Dehumidifying volume (l/h)		0.8
C.O.P /EER (W/W)		2.5
Indoor Unit	Model	KF-25G
	Fan motor speed (r/min) (H/M/L)	960 /870 /780
	Output of fan motor (w)	8
	Input of heater (w)	/
	Fan motor capacitor (uF)	1
	Fan motor RLA (A)	0.1
	Tan Type-piece	Cross flow fan -1
	Diameter-length (mm)	Φ97 x 583
	Evaporator	Aluminum fin-copper tube
	Pipe diameter (mm)	Φ 7
	Row-fin gap (mm)	2 – 1.4
	Coil length (l) x height (H) x coil width (L)	576 x 230 x 25.4
	Swing motor model	MP28EA
	Output of swing motor (w)	2
	Fuse (A)	PCB 3.15A Transformer 0.2A
	Sound pressure level dB (A) (H/M/L)	38 /35 /32
	Sound power level dB (A) (H /M /L)***	48 /45 /42
	Dimension (W /D /H) (mm)	740 /180 /250
	Dimension of package (W /D /H) (mm)	870 /336 /280
	Net weight /Gross weight (kg)	8 /11

Outdoor Unit	Model	KF-25W
	Compressor model	2P17S225ANA
	Compressor type	Rolling piston type
	L.R.A. (A)	18
	Compressor RLA (A)	4.1
	Compressor power input (W)	880
	Overload protector	MRAS98776
	Throttling method	Capillary
	Starting method	Capacitor
	Working temp range (°C)	18 ~ 43
	Condenser	Aluminum fin-copper tube
	Pipe diameter (mm)	Φ 9.52
	Rows-Fin Gap (mm)	1-1.6mm
	Coil length (I) x height (H) x coil width (L)	700 x 406 x 22
	Fan motor speed (rpm) (H/M/L)**	950
	Output of fan motor (W)	20
	Fan motor RLA (A)	0.4
	Fan motor capacitor (uF)	2
	Air flow volume of outdoor unit	1400
	Fan type-piece	Axial fan -1
	Fan diameter (mm)	Φ 320
	Defrosting method	Auto defrost
	Climate type	T1
	Isolation	I
	Moisture protection	IP24
	Permissible excessive operating pressure for the discharge side (MPa)	2.5
	Permissible excessive operating pressure for the suction side (MPa)	0.6
	Sound pressure level dB (A) (H /M /L)	52
	Sound power level dB (H /M /L)	62
	Dimension (W /D /H)	660 x 320 x 428
	Dimension of package (W /D /H) (mm)	765 x 350 x 490
	Net weight /gross weight (kg)	25 /29
Refrigerant charge (kg)	R22 0.68	

Connection pipe	Length (m)		4
	Outer diameter	Liquid pipe (mm)	6
		Gas pipe (mm)	9.52
	Max distance	Height (m)	5
		Length (m)	10

EXPLODED VIEW & PART LIST

Indoor Unit

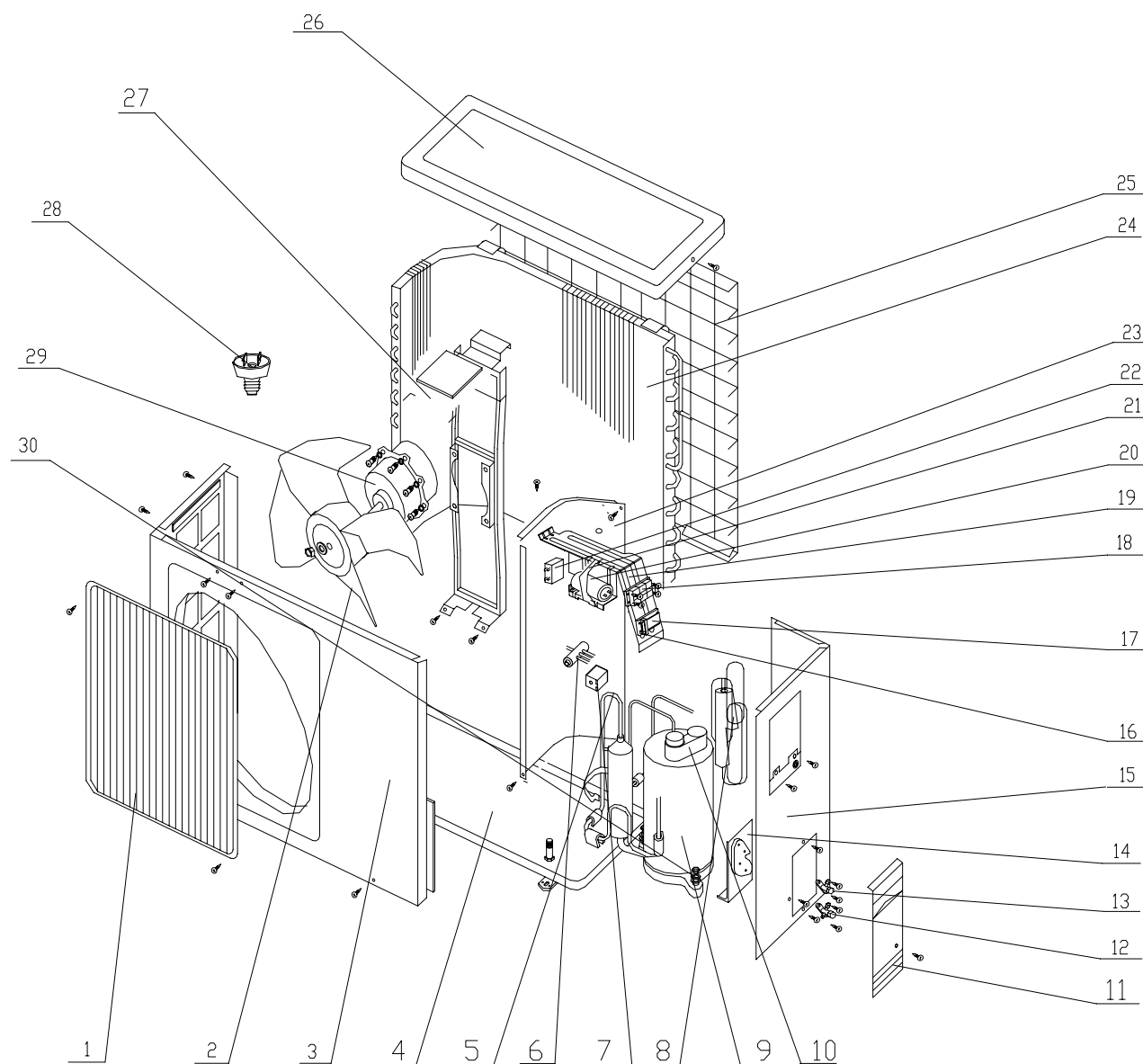


Part list for indoor unit

No	Part name	Qty
1	Wall mounting frame	1
2	Rear case	1
3	Evaporator pipe cover	1
4	Drainage pipe	1
5	Pipe clamp	1
6	Cross flow fan	1
7	Fan bearing	1
8	Ring of bearing	1
9	Water tray	1
10	Swing louver	12
11	Swing link	1
12	Manual lever	2
13	Evaporator assy	1
14	Evaporator support	1
15	Front case	1
16	Screw cover	2
17	Front panel	1
18	Filter	2
19	Air cleaner holder	2
20	Guide louver	1
21	Remote controller Y512F	1
22	Guide louver bearing	3
23	Main PCB	1
24	Fuse 3.15A 250V AC	1
25	Room sensor	1
26	Tube sensor	1
27	Sensor insert	1
28	Stepping motor MP28EA	1
29	Motor FN8L	1
30	Motor clamp	1
31	Wire clip	1
32	Wire clamp	1
33	LED holder	1
34	Receiver board JD	1
35	Receiver board K	1
36	Terminal board T240A	1
37	Electric box cover	1
38	Electric box	1
39	Transformer SC23B	1
40	Connecting cable	1

No	Part name	Qty
41	Power cord	1
42	Signal control wire	1
43	Cold plasma generator	1
44	Cold plasma generator cover	2

Outdoor Unit

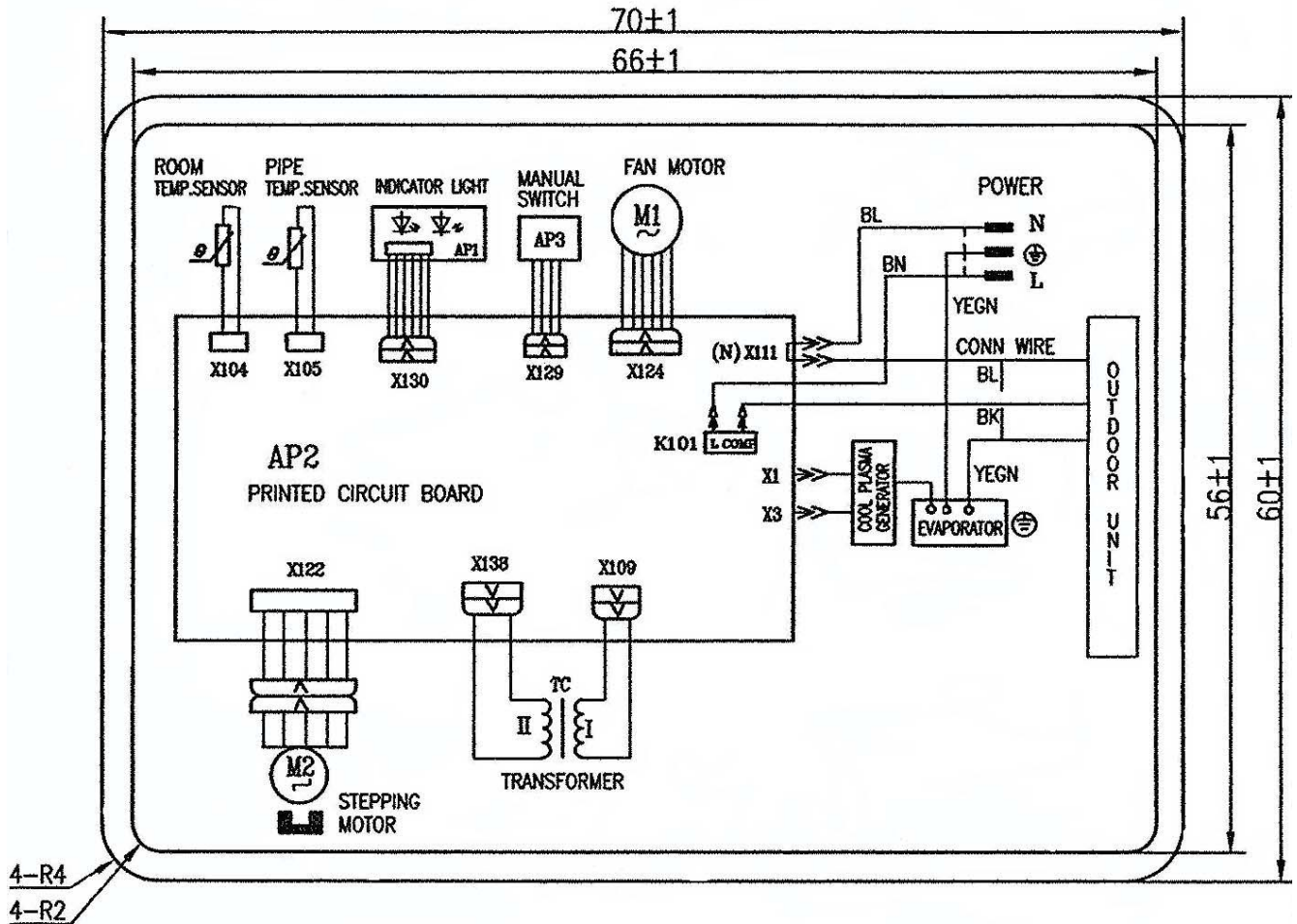


Part list for outdoor unit

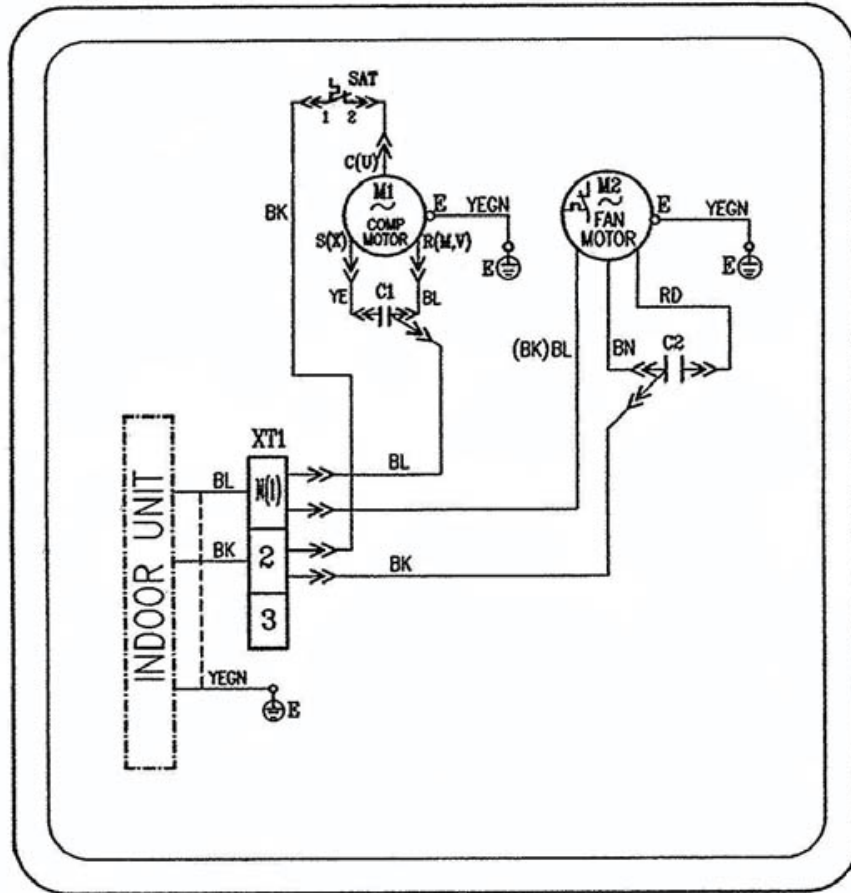
No	Part name	Qty
1	Front grill	1
2	Axial flow fan	1
3	Front plate	1
4	Metal base	1
5	4-way rever –sing valve component	1
6	4-way valve	1
7	4-way valve coil	1
8	Capillary assy	1
9	Compressor 2P17S225ANA	1
10	Overload protector	1
11	Handle	1
12	Gas valve	1
13	Liquid valve	1
14	Valve support	1
15	Right side plate	1
16	Wire clamp plate	1
17	Wiring clamp cover	1
18	Terminal board T386A	1
19	Electrical plate	1
20	Comp capacitor	1
21	Capacitor clamp	1
22	Fan capacitor	1
23	Isolation sheet assy	1
24	Condenser assy	1
25	Rear grill	1
26	Top cover	1
27	Motor support	1
28	Drainage connector	1
29	Motor FW20F	1
30	Compressor gasket	3

CIRCUIT DIAGRAM

INDOOR UNIT



OUTDOOR UNIT





Большая библиотека технической документации
<https://splitsystema48.ru/instrukcii-po-ekspluatacii-kondicionerov.html>
каталоги, инструкции, сервисные мануалы, схемы.